

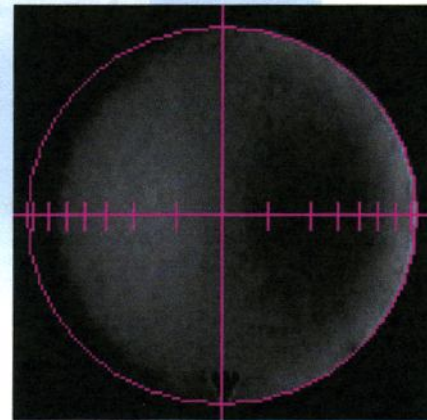
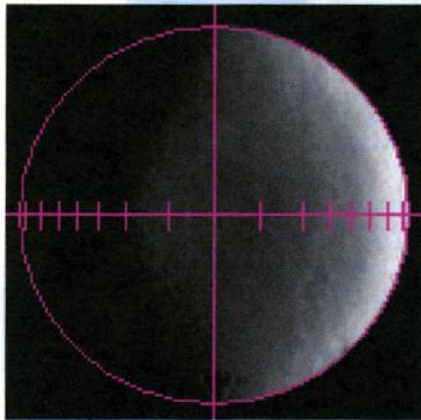


MIRROR CERTIFICATION

7/1/2005

Mirror Physical Data

Substrate:	Pyrex	Edge Thickness:	1.5*
Diameter:	12.5"	Focal Length:	81"
Clear Aperture:	~12.375	Exact Focal Ratio:	6.48
P-V WaveFront:	1/13.88	Strehl Ratio:	0.98



Guarantee:

This optic is guaranteed to perform at its theoretical limits of magnification, provided proper mounting, optical system collimation, suitable support optics and atmospheric conditions.

A handwritten signature in black ink, appearing to read "Car W L", is written on a white rectangular background.